



The Trend

Put your hands together for the Trend, by Atrium Homes.

Atrium Homes is a West Australian building company owned and run by the Marcolina family. For over 50 years, three generations of the Marcolina family have been designing and building award-winning family homes of distinction, quality and style.

An integral feature of the Atrium tradition is the emphasis on quality construction and materials, backed up by

a pride in craftsmanship and a strong commitment to personal service and value for money.

It is this attitude that creates the Atrium difference.

The Design Studio extends the Atrium tradition to a range of specially designed luxury residences that offer a sound investment in quality living.

We design homes that are perfect for one family. Yours.

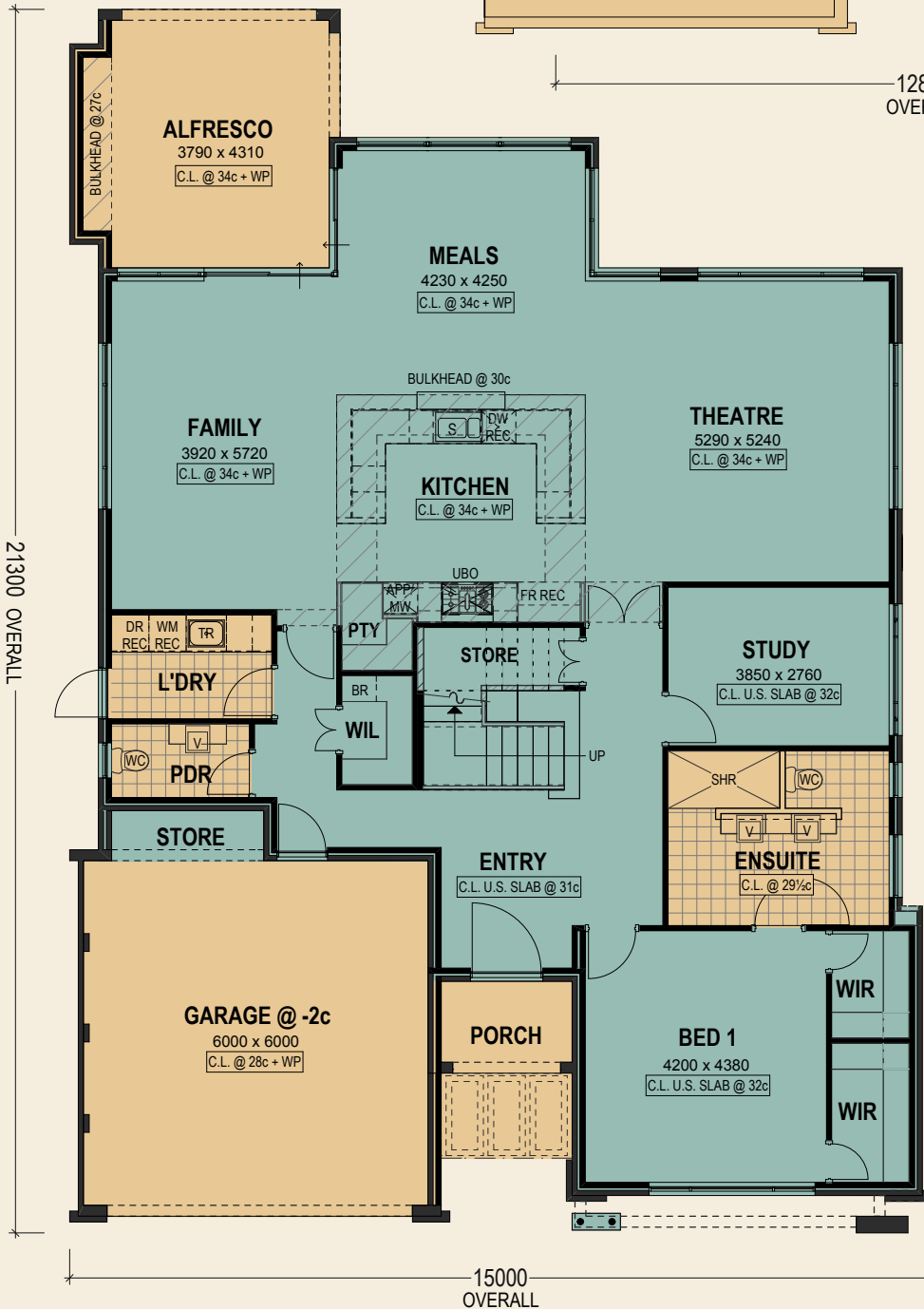
DESIGN
ATRIUM
HOMES
STUDIO

An investment in Quality

atrium-homes.com.au

The Trend Floor Plan

Overall Area 364.03m²



Ground floor	193.40m ²
First floor	105.32m ²
Garage	41.4m ²
Porch	3.65m ²
Alfresco	20.26m ²
Total	364.03m²

© Copyright Atrium Homes. Reproduction or modification of this plan in whole or in part without written permission is an infringement of copyright which will result in legal action being taken. All sizes shown in plan are approximate.

Setting the trend for modern family living.



The open plan kitchen area is the epitome of entertaining, featuring a commanding U-shaped stone benchtop overlooking the entire rear living space.



A rear living space offers a light and relaxing retreat for the entire family.



The master ensuite makes a bold statement, with twin basins and ample storage.



A luxury stunning stainless steel staircase leads you from the wide entry up to the second level.



Escape to the second living space, designed at the heart of the three upstairs bedrooms.

Atrium Homes doesn't follow trends; it sets them.

And the Trend breaks new ground in contemporary living; living that doesn't compromise on quality or style, while perfectly meeting the needs of today's families.

The Trend also offers incredible value for money, making it even more attractive to families looking for a lifestyle that is a step above the everyday.

The appeal starts with an architectural elevation that provides a fitting entry statement. A floorplan demonstrating clever separation places the master suite - with its twin walk-in robes and luxurious ensuite - downstairs, along with a home office. On the other side of the entry is a handy powder room, and a laundry with mounted side-by-side appliances and loads of storage.

Taking up the entire rear section of the home is the spacious, light-filled kitchen, dining and living area. At the heart of it all is the magnificent open-plan kitchen, with wide stone benchtops facing three sides to ensure the home chef is always part of the action. The kitchen lacks for nothing - stainless steel appliances, an integrated dishwasher, and loads of storage including a pantry, microwave and appliance cabinets and soft-close drawers.

This is a home designed for easy entertaining, and there's no shortage of either space or options. The dining area flows effortlessly through sliding doors to an alfresco area with a built-in barbecue/kitchen, while the living area connects with another outdoor party area.

Children, teenagers and guests will love retreating to their own space upstairs, with a generous sitting/TV room, three big bedrooms with built-in robes, and the family bathroom with a twin vanity and deep bath.

The Trend - another outstanding display home from Atrium Homes.

The Trend

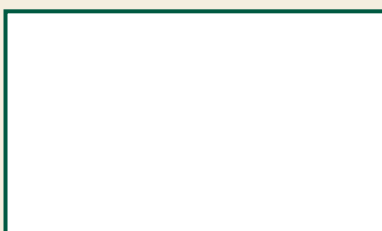
SPECIFICATIONS

- Fixed price contract.
- Architectural Design Service available to suit your personal requirements.
- 100mm thick engineer designed slab and footings.
- Double clay brick construction.
- Acrylic texture render finish to all external walls including to inside of garage.
- Colorbond roof cover including Colorbond gutters and fascia.
- R3.5 batt insulation.
- Rheem 5 star gas storage HWU.
- Full copper hot and cold water service.
- Wall faced ceramic cisterns.
- Plasterboard lining and cornice to Garage and Alfresco.
- Cairo 3 step cornice throughout.
- Extensive use of 28c head aluminium windows and sliding doors.
- Quality external door furniture throughout.
- Feature 1200mm wide 28c high Entry door.
- Gainsborough G2 Series Precise lever S/C internal door furniture.
- Feature towel ladder to Ensuite.
- Feature glazed doors to Entry/Kitchen.
- Satinlite glazed aluminium door to Laundry.
- 28c high flush panel internal doors.
- Key locked aluminium windows and sliding doors.
- Flyscreens to windows and sliding doors.
- Full painting external and internal (including three coat internal wall painting).
- Customwood window sills as per plan.
- Splayed skirting to all habitable areas including to stairs.
- All shelving white lined melamine.
- One shelf to Bedroom 1 walk in robes with two shelves on side wall. One shelf to broom cupboard
- Four shelves to pantry and linen
- Feature double bowl stainless steel kitchen sink.
- Quality European stainless steel 900mm wide electric oven, gas hotplate and rangehood
- Stone tops to Kitchen including 2 feature end panels.
- Kitchen cupboard doors Laminex Natural Vinyl with handles.
- Feature tiled splashback wall and upstand wall to Kitchen.
- Two banks of four drawers
- Three banks of three drawers.
- Two banks of two drawers.
- Soft closers to all cupboard drawers
- Laminex Natural Vinyl cupboard doors to all vanities.
- Bank of three drawers to Ensuite.
- Laminate square form edge cupboard tops to laundry with stainless steel inset trough
- Linen drawer to Laundry.
- Generous ceramic tiles allowance of \$60/m2 retail.
- Full height wall tiling to Ensuite and WC 1.
- Floor tiles to Ensuite, WC 1, Bathroom, WC 2, Laundry and Powder Room 1.
- Quality flickmixer taps to sink, basins, baths and showers.
- Shower rail set to all showers
- Two sets of taps and roses to Ensuite shower with an overhead shower rose.
- Quality vitreous china basins to all vanities.
- Clear glass semi frameless pivot shower door to Bathroom shower recess.
- Square slimline edge mirrors to over vanity cupboards.
- Quality towel rails and toilet roll holders.
- Privacy locks to Ensuite, WC, Bathroom and Powder Room.
- Feature wrought iron balustrade with stainless steel bars and handrail to stairs and Landing.
- Feature fixed overhead metal screen to outside Porch.
- Auto sectional garage door with coloured frame and Perspex panels.
- Exposed aggregate paving to Porch, Path to Porch, Drive way and Alfresco from Builder's range.
- Grey grano paving to Garage floor.

PRICE DOES NOT INCLUDE: Decorator items, light fittings, wallpaper, floor coverings, interior designer built in cabinets, cabinet and BBQ to Alfresco, pergola, extra aggregate paving to rear, tiling to main living areas, window treatments, landscaping, reticulation, reverse cycle air conditioning, security system, structured cabling system, tiled steps and cappings, site works, underground power connection and retaining walls. All these items can be priced on application.

*Specifications subject to change.

atrium-homes.com.au



15 Umina Way,
Burns Beach.

Atrium Homes is a family business, with a strong commitment to personal service that prides itself on building high quality homes for the people of Perth.

Head Office: Suite 1, 88 Catalano Circuit,
Canning Vale 6155. Tel: 9455 7888 Fax: 9455 7588
Builders Reg No. 13344



ATRIUM
HOMES